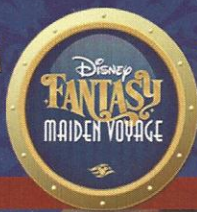


PERSONAL NAVIGATOR

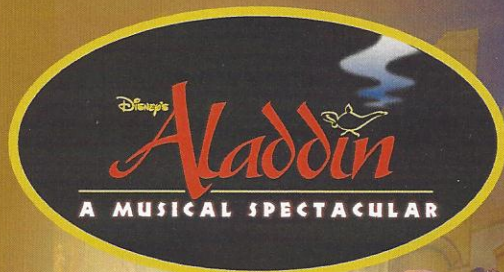


Sunrise: 6:15 a.m. Sunset: 6:55 p.m.
Evening Attire: Formal Attire

Sunday: Partly Sunny High: 77°F/25°C
Monday: Sunny High: 82°F/28°C

SUNDAY, APRIL 1, 2012

DAY AT SEA



New to Disney Cruise Line.
"Disney's Aladdin - A Musical Spectacular"

A fast-paced, musical comedy based on the beloved animated film.

Aladdin, the "street rat" of Agrabah, meets a wise-cracking Genie, baffles the evil Jafar, and falls in love with the beautiful and spirited Princess Jasmine. Disney storytelling at its best.

Assistance available at the entrance to the Walt Disney Theatre 30 minutes prior to show time.



WALT DISNEY THEATRE
Decks 3 & 4 Forward
6:15 PM & 8:30 PM

Disney FANTASY Fun Facts

Tonnage: 130,000 Gross Tons

Height: 216 Feet

Length: 1115 Feet

Important Dates

Name Announcement: March 10, 2009

Steel Cutting: March 16, 2010

Keel Laying: February 11, 2011

Delivery: February 9, 2012

Places of Interest

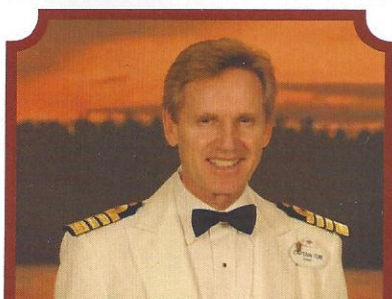
Below are places of interest and approximate times that we will be passing during our voyage to Grand Cayman today:

1:00 a.m. - Port Everglades - Starboard Side

2:15 a.m. - Miami - Starboard Side

7:00 a.m. - Tennessee Reef - Starboard Side

7:00 p.m. - Cuba landfall - Port Bow
Cuba will be on our Port Side for the remainder of the evening.



CAPTAIN'S RECEPTION

Enjoy an exclusive photo with Captain Tom, meet some of the ship's officers and enjoy a cocktail. With live music provided by Fine Whines.

5:15 & 7:30 p.m.
Lobby Atrium,
Deck 3, Midship

Don't Miss:

Disney Animation: Illusion of Life - Creating a Character
9:45 a.m., D Lounge, Deck 4, Midship

Go behind the scenes at Walt Disney Animation Studios as Walt Disney himself talks about his most famous characters, then learn the basic techniques of drawing Mickey, Donald, and Goofy in this fun and interesting enrichment program.

The Quest

1:00 p.m., D Lounge, Deck 4, Midship

Enjoy the wildest and wackiest scavenger team event on the seven seas!

Don "Ducky" Williams Presentation

2:00 p.m., Buena Vista Theatre (18+), Decks 4 & 5, Forward
Senior Character Artist Don 'Ducky' Williams shares his incredible story of how his career started. (This presentation will be repeated for families on Thursday)

Adult Cabaret: Justin Willman

10:15 p.m., The Tube (18+), Deck 4, Aft
Featuring the Comedy & Magic of Justin Willman, as he entertains you in this adult Cabaret-Style show.



AquaDuck Photos!

Riding the AquaDuck today? Want to remember the ride forever? Ride on any day at sea and you will get your photo taken. Please remember to enter your stateroom number on the touch screen before you climb into your raft! Photos will be available in Shutters, Deck 4, Midship.

DINNER MENU

Animator's Palate: Pacific Rim Cuisine
Enchanted Garden: Continental Market
Royal Court: French Dinner Menu

DRINK OF THE DAY

Mai Tai (Alcoholic)
Coco Bali (Non Alcoholic)

IMPORTANT NUMBERS

Fire/Security: 7-3001
Medical Emergency: 7-3000
Health Center: 7-1923

FAMILY ACTIVITY HIGHLIGHTS

DISNEY FANTASY - TALENT SHOW SIGN UPS

Guest Services, Deck 3, Midship

Does your family have what it takes to make their performing dreams come true? Find out at the Disney Fantasy Family Talent Show – dare to show your family's flair! Pre-register at the Guest Services Desk, Deck 3 Midship. Your last chance to sign up is at 4:00 p.m. on Thursday.

WAKE UP WITH DISNEY JUNIOR

D Lounge, Deck 4, Midship - 9:00 a.m.

What happens when you experience unlimited fun with your favorite Disney Junior shows? An exciting dance party designed especially for pre-schoolers ages seven and under.



JACK-JACK'S INCREDIBLE DIAPER DASH

Lobby Atrium, Deck 3, Midship - 11:00 a.m.

Calling all baby cruisers! The Disney Fantasy's babies take to the mat to see who's the fastest crawler of the seven seas!

PORT & SHOPPING SHOW

Buena Vista Theatre, Decks 4 & 5 Midship - 11:30 a.m.

Join your Port & Shopping Guides Johan & Marissa to learn about the incredible tax and duty free shopping in our ports of call this cruise.

FAMILY CRAFTS - SCRAPBOOKING

D Lounge, Deck 4, Midship - 12:15 p.m.

Start creating and collecting your cruise memories at this scrapbooking session. Your Cruise Staff will be on hand with a special gift for all attendees.



ANYONE CAN COOK

D Lounge, Deck 4, Midship - 2:30 p.m.

From our galley to yours; join our chefs as they show you how to prepare delicious dishes. Today's menu: Apple Strudel.

FAMILY SUPERSTAR KARAOKE

D Lounge, Deck 4, Midship - 7:15 & 10:45 p.m.

Join your Cruise Staff in D Lounge tonight and sing along to your favorite song - fun for everyone.

FORMAL NIGHT AFTER PARTY

D Lounge, Deck 4, Midship - 9:45 p.m.

Join your Cruise Staff and "The Dreamers" as we continue the party, with special appearances from the world famous Disney characters.



ADULT ACTIVITY HIGHLIGHTS

SENSES SPA SEMINARS

Sunrise Stretch - Senses Fitness Center 7:00 a.m.

Fab Abs - Senses Fitness Center 7:30 a.m.

Pathway to Yoga - Senses Fitness Center 8:00 a.m.

Body Sculpt Boot Camp (Fee Applies) - Senses Fitness Center 9:00 a.m.

Group Cycling - Senses Fitness Center 10:15 a.m.

Seminar: Introduction to Acupuncture - Outlook 10:15 a.m.

Seminar: Secrets to a Flatter Stomach - Outlook 11:00 a.m.

Seminar: Detox for Health & Weight Loss - Senses Spa & Salon 2:00 p.m.

Fitness Frenzy (13-17 yrs) - Senses Fitness Center 3:30 p.m.



TASTING SEMINARS

Wine Tasting (21+) - Meridian, 1:00 p.m.

Martini Tasting (21+) - Skyline, 3:00 p.m.

Please make reservations for tastings at Guest Services for a nominal fee.

Tasting Seminars are only for Guest's 21 and Older.

DIAMOND & GEMSTONE SEMINAR

The Tube, Deck 4, Aft - 3:30 p.m.

Join your Port & Shopping Guides Johan & Marissa to learn about exotic Caribbean Gemstones, Tanzanite & Diamonds. Free gemstone pendant for all in attendance!

ART OF THE THEME SHOW TOUR

Meet at Meridian, Deck 12, Aft - 4:00 p.m. (Repeated throughout the cruise)

A walking tour that highlights the ship's design of Disney culture, theming and artistry.

LIVE PIANO MUSIC WITH CHARLIE REUTER

La Piazza, Deck 4, Aft - 7:30, 9:45 & 10:45 p.m.

Join Charlie Reuter in La Piazza this evening as he plays live for your listening pleasure, including a special "Swinging and Sailing" set at 9:45 p.m. with Rat Pack inspired tunes from Frank Sinatra, Dean Martin and Sammy Davis Jr.



ESPN DREAM TEAM DRAFT DAY - BASEBALL

O'Gills Pub, Deck 4, Aft - 7:30 p.m.

Play ball! Join the "Commissioner" and engage in this interactive fantasy baseball draft unlike anything you've ever seen! Can YOU draft the greatest baseball team of All-Time?

KICKSTART BINGO

D Lounge, Deck 4, Midship

Card Sales - 10:45 a.m. Game Starts - 11:00 a.m.

Join us for our first session of Jackpot Bingo, with four CASH prizes to be won. Everyone in attendance will receive a FREE bingo card for one of the four cash prize games. Plus your chance to win a Diamond and Sapphire Pendant, courtesy of your Shopping Guides Johan & Marissa.

SENSES SPA JACKPOT BINGO

**D Lounge,
Deck 4, Midship**

Card Sales - 3:30 p.m.

Game Starts - 3:45 p.m.

Four CASH prizes up for grabs plus great spa prizes to be won, including a mini facial and massages, courtesy of the Senses Spa and Salon.



YOUTH ACTIVITIES HIGHLIGHTS

DINE & PLAY

A convenience for families dining at 8:15 p.m., our Youth Activities Counselors will be available at 9:15 p.m. at the entrance of Royal Court, Enchanted Garden and Animator's Palate dining rooms to bring registered children to join the fun in the Youth Activity areas.

CLUBHOUSE KIDS

Is a structured play time offered during secured programming, and is recommended for children ages 3-7. During Clubhouse Kids time in the Oceaneer Club Counselors will be able to interact and encourage the youngest cruisers in specific activities, ensuring they are engaged.



Deck 5 Midship (7-5864) 9:00 a.m. - 11:00 p.m.

OPEN HOUSE

8:00 - 9:00 a.m.

Your chance to see our toddler space, It's A Small World Nursery.



Deck 5 Midship (7-1440) 10:00 a.m. - 12:00 Mid.

TOY STORY BOOT CAMP

10:15 a.m.

Ten-hut! The Green Army Men are holding a boot camp and your junior cruiser is invited to join in the fun.

ONCE UPON A TIME

7:30 p.m.

Join Beverley the Bookmaker for a magical, musical story time featuring a Disney Princess!



Deck 5 Midship (7-1445) 9:00 a.m. - 12:00 Mid.

STITCH'S ADVENTURE SQUAD

9:30 a.m.

Stitch, everyone's favorite alien, is making an appearance to share some of his mischievous games and activities.

GET THE HOOK

3:00 p.m.

A villainous villain has stolen Captain Hook's prized golden hook. Become a member of the Top Detective Agency and help solve the clue's to retrieve Hook's hook.



Deck 13 Midship (41-14426) 10:00 a.m. - 1:00 a.m.

MIRROR, MIRROR GAME SHOW

11:45 p.m., D Lounge, Deck 4, Midship

It's time to play the fairest game show of them all, Mirror, Mirror. Whether you're Happy, Grumpy or even Dopey you'll love competing for all the apples!



Entrance on Deck 4 Forward (7-9418)
12:00 p.m. - 2:00 a.m.

ZOMBIFIED

11:00 a.m.

Help the Production Assistant to rally the teens and complete this big shot Hollywood production.

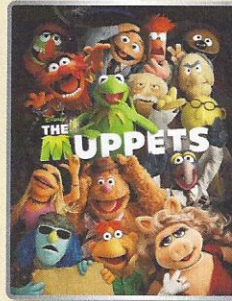
ANYONE CAN COOK - PIZZA

2:30 p.m.

Anyone can cook as we work together to create some of our favorite treats.

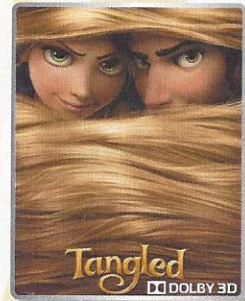
BUENA VISTA THEATRE

Today's Movies



9:00 a.m.

Run Time: 1 hr 43 mins
Rating: PG

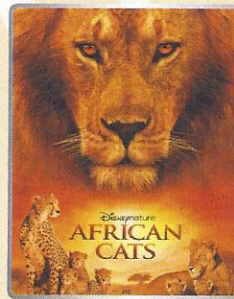


Tangled

DOLBY 3D

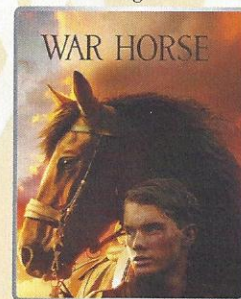
3:30 p.m.

Run Time: 1 hr 40 mins
Rating: PG



5:45 & 8:15 p.m.

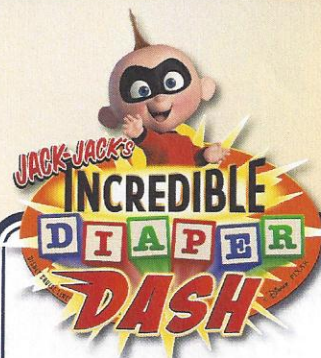
Run Time: 1 hr 29 mins
Rating: PG



WAR HORSE

10:15 p.m.

Run Time: 2 hr 26 mins
Rating: PG-13



Calling all baby cruisers!
The Disney Fantasy's babies take to the mat to see who's the fastest crawler of the seven seas!

Lobby Atrium,
Deck 3, Midship
11:00 a.m.



FAMILY CABARET

Featuring the
Music & Comedy of
Buckets N Boards, as they
entertain the entire family
in this fun-filled show.

The Tube,
Deck 4, Aft
7:30 p.m.

YOUTH ACTIVITIES OPEN HOUSE

Open House is an opportunity for all to come and participate in a variety of exciting activities and free time in the Oceaneer Club, Lab, Edge and Vibe throughout the cruise. During these times secured programming will still be offered in the other venue for those looking to check their children into care.

MORE TO ENJOY WHILE ONBOARD

ONBOARD AIRLINE CHECK IN

If you would like to have your boarding passes printed for you onboard and have your luggage taken to the airport, register by 8:00 p.m. on Wednesday April 4th. If you have Disney Cruise Line airport transfer to Orlando International Airport and fly with one of the participating airlines. Please stop at Guest Services, Deck 3, Midship.



DISNEY VACATION CLUB® GROUP PREVIEW

Want to learn more about taking magical vacations year after year? Please see a Disney Vacation Club representative on Deck 4, Mid-Ship, or call 7-2805 from your stateroom phone for more information about our interactive group presentation.



PORT & SHOPPING SHOW

Join your Port & Shopping Guides Johan & Marissa to learn about the incredible tax & duty free shopping in Grand Cayman, Cozumel & Costa Maya. Everything will be covered from Rolex to Rum Cakes, Diamonds to Color Changing T-Shirts! All in attendance will receive a FREE Caribbean Charm Bracelet & be entered to win a Diamond Pendant! Buena Vista Theatre, Decks 4 & 5, Forward at 11:30 a.m.



SENSES
SPA & SALON

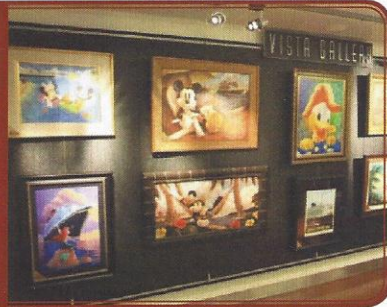
ACUPUNCTURE

Acupuncture allows your body to heal itself. Acupuncture is comforting to the mind and body and has been proved to be effective over 100 conditions. \$150 and 60 minutes

Call Senses Spa & Salon, 7-1465

TODAY'S SHOPPING SPECIAL

Your chance to take part in our Silent Art Auction today.
Vista Gallery,
Deck 4, Midship
2:00 - 6:00 p.m.



FORMAL PORTRAITS TONIGHT!

Moon, Mural & Bow - Six guests maximum please
Grand Staircase & Minnie Statue - Groups accommodated

5:00 p.m. - 6:00 p.m.

7:15 p.m. - 8:30 p.m.

9:30 p.m. - 10:30 p.m.

**Please note that photos are available for viewing on our interactive photo kiosks approximately five hours after being taken and are only available for purchase during this cruise.*

SURF @ SEA

\$0.75 per minute, or save money by buying blocks of time. \$55.00 for 100 minutes, \$100.00 for 250 minutes and \$150.00 for 500 minutes. Wireless information sheets are available at Guest Services, Deck 3, Midship.

Please note: Due to satellite connectivity, onboard internet service will be noticeably slower than you may be accustomed to and may at times be interrupted or unavailable.

ON DEMAND TV

Watch Disney movies, Hollywood features, ABC Shows, and even captioned content, plus much more "On Demand" for FREE in the comfort of your stateroom! Bookmark your movie and come back to watch it later. Press MENU on your stateroom television remote control, and follow the prompts.



PLAN YOUR NEXT CRUISE TODAY

Book your next cruise today for the best availability and pricing. You'll save 10%, receive up to a \$200 onboard credit, and pay a reduced deposit! Tune to Channel 8 on your stateroom TV for details, visit the Future Cruise Sales Desk, Deck 4 Midship, or call 7-2848.



Limited spaces available for our most popular tours, so visit the Port Adventures Desk today to reserve your place. Why not explore the Chacchoben Mayan Ruins in Costa Maya, an awe-inspiring reminder of this fascinating civilization. For the families, we offer Dolphin experiences in Grand Cayman, Costa Maya and Cozumel, so why not let this cruise be the time to enjoy this once in a lifetime experience.

SHOPPING

MAIDEN VOYAGE, INAUGURAL AND FANTASY MERCHANDISE

Available in Sea Treasures, Mickey's Mainsail and Whitecaps, Deck 3, Forward.

MERCHANDISE PRODUCT LIMIT

All Maiden Voyage, Inaugural and Fantasy Merchandise will have a limit of two per person, per style, per size (where applicable).

LIMITED EDITION MERCHANDISE RANDOM SELECTION PROCESS

Have you completed your request for Limited Edition Merchandise? Please visit Whitecaps to view our selection and complete the form, starting today at 9:00 a.m. Registration closes at 4:00 p.m.

HISTORY OF DIAMONDS SEMINAR

Hosted by diamond industry expert and creator of Sophia Fiori, Bernard Bachoura. Enjoy a short, fun, and fascinating seminar on the history of the most romantic stone on earth. From the science & discovery a million years ago to diamonds worn by Elizabeth Taylor and Marilyn Monroe, to how they've become the ultimate expression of love and a staple in your jewelry wardrobe today. Join Bernard for 30 minutes and walk away with exciting stories to tell your dinner friends. 9:00 a.m., O'Gills Pub, Deck 4, Aft.

MEET DESIGNER TO THE STARS, BERNARD BACHOURA!

Once in a lifetime opportunity right here on the Disney Fantasy! Enjoy one on one time with Hollywood's favorite jewelry designer & creator of Sophia Fiori, Bernard Bachoura. Feel like Hollywood Royalty and let Bernard be your personal jewelry stylist this week, helping you build your jewelry wardrobe to suit your lifestyle and budget. Bernard will share inspiring stories about designing jewelry from the age of 13, to the inspiration behind Sophia Fiori, and excitement for the history of the blue diamond. Whitecaps, Deck 3, Forward, 5:00 p.m. - 8:00 p.m.

SOPHIA FIORI GUESS THE CARAT WEIGHT

Guess the Carat weight of one of our exquisite Sophia Fiori diamond rings. Whoever guesses closest wins a 5 Carat Midnight Sapphire and a pair of Sapphire Studs! 5:00 p.m. - 10:00 p.m., Winners Draw & Raffle 10:00 p.m., must be present to win. Whitecaps, Deck 3, Forward.

Due to port regulations, when the ship is docked, the stores will remain closed.

IMPORTANT INFORMATION

Security Notice

All Guests (including children) who wish to disembark the ship are required to present their Key to the World card at the gangway. A photo ID is also required for those Guests who are 18 years of age or older. Guests under the age of 18 are required to have a Parent, Guardian or other responsible adult sign an authorization form at the time it is given out if they wish to go ashore unaccompanied. Authorization forms are available at the gangways and Guest Services.

Cold and Flu Reminder

Please wash hands frequently and thoroughly, particularly before meals. Contact the Health Center by dialing 7-1923, should anyone in your party become ill.

Corridor Quiet Hours

As a courtesy to all our Guests, please recognize quiet hallway hours from 10:00 p.m. til 8:00 a.m.

Inclement Weather

For the safety of all Guests, outdoor events may be changed due to unforeseen weather conditions.

Environmental Message

With Disney's commitment to the Environment, please refrain from throwing anything over the Ship's side. Thank you!

No Reserved Seats Policy

As a courtesy to all our Guests, we kindly advise that the saving of seats is not permitted in the Walt Disney Theatre, and the saving of the sun loungers is not permitted on Deck 11, 12, and 13. Items left unattended will be returned to lost and found at Guest Services, Deck 3 Midship.

Smoking

For the comfort of our guests the following areas are designated as Smoking areas: - Promenade Deck (Deck 4), smoking is permitted Port Side, Aft only from 6:00 p.m. to 6:00 a.m.
- Currents - Deck 13, Forward, Port Side.
- Meridian Bar - Deck 12, Aft, Port Side, outside.
- Smoking is permitted on stateroom verandahs. Smoking is prohibited inside all guest staterooms. Guests found smoking in their staterooms will be charged a \$250 stateroom recovery fee.

Walt Disney Theatre

Theatrical performances may use artificial fog, strobe lights, pyrotechnics and other special effects. For the safety of our performers and the comfort of those around you, the use of any photography, video recording device or any electronic equipment is prohibited.



Verandah Safety

Please do not leave any combustible materials on your balcony when not present in your stateroom for safety reasons.

DF/BD/7W/001/3.31.12/NCA/©DISNEY


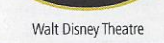
	8:30	8:45	9:00	9:15	9:30	9:45	10:00	10:15	10:30	10:45	11:00	11:15	11:30	11:45	12:00	12:15	12:30	12:45	1:00	1:15	1:30	
FUNNELVISION					Tinker Bell (G) FunnelVision				Pixar Shorts (G) FunnelVision				Movie Challenge Poolside FunnelVision									
MOVIES	The Muppets (PG) Buena Vista Theatre																					
CHARACTER					Emille Lobby Atrium	Woody Lobby Atrium	Remy Lobby Atrium	Buzz Lobby Atrium	Emille Lobby Atrium	Jessie Lobby Atrium	Remy Lobby Atrium	Buzz Lobby Atrium										
FUN FOR ALL AGES	Wake Up With Disney Jr. D Lounge				Disney Animation - Creating a Character D Lounge				Bingo Pre Sales	Kick Start Jackpot BINGO D Lounge				Movie Challenge Poolside Deck Stage								
	Interdenominational Service Outlook Dk13 Midship				History of Diamonds O'Gills Pub				Paper Plane Making La Piazza				Jack Jacks Diaper Dash Lobby Atrium		Port & Shopping Show Buena Vista Theatre		Family Crafts - Scrapbooking D Lounge		The Quest D Lounge			
ADULTS	Longest Drive Golf Simulator				Xbox™Kinect®- Wipeout O'Gills Pub				Crafts - Tile Coasters O'Gills Pub				70's Music Challenge O'Gills Pub									
ADULTS	Boot Camp (Fee Applies) Senses Fitness Center				Friends of Bill W. Outlook Dk13 Midship				Introduction to Acupuncture Seminar Outlook				Secrets to a Flatter Stomach Outlook				Wine Tasting (21+) Meridian (Fee Applies)					
Vibe	Open House				Hangin in Vibe				Zombified				Hangin in Vibe									
Edge	Open House				Hangin in Edge				Animation Cells													
Oceaneer Lab	Stitch's Adventure Squad				Super Sloppy Science - Flubber				Youth Lunch				Open House									
Oceaneer Club	Memory Wall				Toy Story Bootcamp								Magic Playfloor				Talent					
Out & About	Open House & Registration				Clubhouse Kids				Open House in Edge													

Symbol for activities that will be repeated during the cruise

	1:45	2:00	2:15	2:30	2:45	3:00	3:15	3:30	3:45	4:00	4:15	4:30	4:45	5:00	5:15	5:30	5:45	6:00	6:15	6:30	6:45
FUNNELVISION					Bolt (PG) FunnelVision				Camp Rock (G) FunnelVision												
MOVIES					Tangled (PG) DOLBY 3D Buena Vista Theatre				DisneyNature: African Cats (PG) Buena Vista Theatre												
CHARACTER	Princess Gathering Lobby Atrium		Minnie Dk 4, Midship						Minnie Dk 4, Midship		Donald Dk 4, Midship		Mickey Dk 4, Midship								
FUN FOR ALL AGES	Cruisin' For Trivia D Lounge				Bingo Pre Sales		BINGO D Lounge		Senses Spa Jackpot D Lounge		Captain's Reception Lobby Atrium										
	Shuffleboard Tournament Deck 4, Port Side		Disney Vacation Club Presentation The Tube		H.O.R.S.E Sports Deck, Deck 12, Aft		Walt Disney Theatre														
ADULTS	Detox for Health & Weight Loss Senses Spa and Salon				Live Guitar Satellite Falls				Diamond & Gemstone Seminar The Tube												
ADULTS	Don 'Ducky' Williams Presentation Buena Vista Theatre				Martini Tasting (21+) Skyline (Fee Applies)				Art of the Theme Show Tour Meet at Meridian												
Vibe	Anyone Can Cook - Pizza				Dive into DJing																
Edge	Dodgeball																				
Oceaneer Lab	Super Sloppy Science		Get The Hook		Anyone Can Cook		Youth Dinner				Mirror, Mirror										
Oceaneer Club	Tinker Bells Talent Show		Parachute Games		Cruisin' With Crush																
Out & About	Hold the Phone Meet at Deck 2, Midship				Fitness Frenzy Senses Fitness Center																

FOLD

Fold along the dotted lines and take me with you so you don't miss any of the fun!

	7:00	7:15	7:30	7:45	8:00	8:15	8:30	8:45	9:00	9:15	9:30	9:45	10:00	10:15	10:30	10:45	11:00	11:15	11:30	11:45	12:00
FUNNELVISION					Tarzan (G) FunnelVision				G-Force (G) FunnelVision												
MOVIES					DisneyNature: African Cats (PG) Buena Vista Theatre				War Horse (PG-13) Buena Vista Theatre												
CHARACTER	Minnie Dk 4, Midship	Goofy Preludes	Mickey Dk 4, Midship	Minnie Preludes	Daisy Dk 4, Midship			Pluto Preludes	Mickey Dk 4, Midship	Minnie Dk 4, Midship											
FUN FOR ALL AGES	Captain's Reception Lobby Atrium				Formal Night After Party D Lounge																
	Buckets & Boards The Tube		Live Music with Fine Whines Lobby Atrium																		
	Family Superstar Karaoke D Lounge				Family Superstar Karaoke D Lounge																
ADULTS	ESPN Dream Team Draft Day O'Gills Pub				Swinging & Sailing La Piazza				Justin Willman The Tube	Rock The Tube with Guest DJ Z The Tube >2:00am											
ADULTS	Live Music with Charlie Reuter La Piazza				Live Music with Rob Thompson O'Gills Pub				50 Movie Quotes Trivia O'Gills Pub	Live Music with Rob Thompson O'Gills Pub											
Vibe	Smoothie Hour				Pump It up till 11:00 pm				ESPN Dream Team Draft Day				Mirror, Mirror								
Edge	That's Hilarious!				Magic Show				Mirror, Mirror												
Oceaneer Lab	Disney Animation - Create A Character				Piston Cup				Magic Playfloor												
Oceaneer Club	Once Upon a Time				Movie Time																
Out & About	Table Tennis Tournament Meet at Deck 13, Aft																				

OUT & ABOUT SERIES

IN THE SPOTLIGHT SERIES

SOLVE IT! SERIES

JUMP UP! SERIES

CREATE & INVENT SERIES

CLUBHOUSE SERIES

STORYBOOK SERIES

SUNDAY, APRIL 1, 2012 - DAY AT SEA

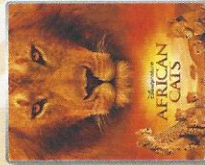
BUENA VISTA THEATRE



9:00 a.m.
Run Time: 1 hr 43 mins
Rating: PG



3:30 p.m.
Run Time: 2 hr 26 mins
Rating: PG-13



5:45 & 8:15 p.m.
Run Time: 1 hr 29 mins
Rating: PG



10:15 p.m.
Run Time: 2 hrs 26 mins
Rating: PG-13

Character Appearances

- EMILIE**
Lobby Atrium - 9:30 a.m.
Lobby Atrium - 10:30 a.m.
- WOODY & JESSIE**
Lobby Atrium - 9:45 a.m.
Lobby Atrium - 10:45 a.m.
- REMY**
Lobby Atrium - 10:00 a.m.
Lobby Atrium - 11:00 a.m.
- BUZZ LIGHTYEAR**
Lobby Atrium - 10:15 a.m.
Lobby Atrium - 11:15 a.m.
- PRINCESS GATHERING**
Lobby Atrium - 2:00 p.m.
- PRINCESS MINNIE MOUSE**
Deck 4, Midship, Balcony - 2:30 p.m.
- PLUTO**
Preludes - 9:30 p.m.
- GOOFY**
Preludes - 7:30 p.m.
- DAISY DUCK**
Deck 4, Midship, Balcony - 8:15 p.m.
- MINNIE MOUSE**
Deck 4, Midship, Balcony - 4:45 p.m.
Preludes - 5:45 p.m.
- WOODY & JESSIE**
Deck 4, Midship, Balcony - 7:15 p.m.
Preludes - 8:00 p.m.
- DONALD DUCK**
Deck 4, Midship, Balcony - 10:15 p.m.
- MICKEY MOUSE**
Deck 4, Midship, Balcony - 5:45 p.m.
Deck 4, Midship, Balcony - 7:45 p.m.
Deck 4, Midship, Balcony - 9:45 p.m.
- GOOFY**
Deck 4, Midship, Balcony - 8:15 p.m.
- PLUTO**
Preludes - 9:30 p.m.

For details of daily Disney character appearances, refer to the character line on your Navigator Grid, or the digital character board in the Lobby Atrium.

YOUTH ACTIVITIES THEMED EXPERIENCES

CLUBHOUSE SERIES

focuses on movement and features content which appeals to younger children.

STORYBOOK SERIES

is designed with a strong connection to the Disney classic stories.

JUMP UPI SERIES

includes large ground games & movement-oriented activities.

CREATE & INVENT SERIES

will have a tactile focus allowing children to create and admire their work.

IN THE SPOTLIGHT SERIES

focuses on children's stage presence with lots of activities and enthusiasm.

SOLVE IT! SERIES

are less active, but will challenge children with problem/solutions-based activities.

OUT & ABOUT SERIES

Set outside secured Youth Activities spaces, very active, appealing to Tweens. Recommended 8 - 14 years

SHIP DIRECTORY

YOUTH ACTIVITIES

DISNEY'S OCEANEER CLUB	DECK 5, Mid	10:00 A.M. - 12:00 A.M.
DISNEY'S OCEANEER LAB	DECK 5, Mid	9:00 A.M. - 12:00 A.M.
EDGE	DECK 13, Mid	10:00 A.M. - 1:00 A.M.
VIBE	ENTRANCE DECK 4, Fwd	10:00 A.M. - 2:00 A.M.
IT'S A SMALL WORLD NURSERY	DECK 5, Mid	9:00 A.M. - 11:00 P.M.

RECREATION

AQUALAB	DECK 12, Aft	9:00 A.M. - 7:00 P.M.
AQUADUCK	DECK 12, Mid	9:00 A.M. - 10:00 P.M.
GOOFY'S SPORTS DECK	DECK 12, Aft	8:00 A.M. - 6:00 P.M.
DONALD'S POOL	DECK 11, Mid	6:00 A.M. - 11:00 P.M.
GOOFY GOLF	DECK 13, Aft	8:00 A.M. - 10:00 P.M.
GOLF SIMULATORS	DECK 13, Aft	9:00 A.M. - 6:00 P.M.
MIDSHIP DETECTIVE AGENCY	DECKS 2 & 5, Mid	9:00 A.M. - 9:00 P.M.
MICKEY'S POOL	DECK 11, Mid	6:00 A.M. - 11:00 P.M.
MICKEY'S SUITE	DECK 11, Mid	9:00 A.M. - 6:00 P.M.
NEMO'S REEF	DECK 11, Mid	9:00 A.M. - 7:00 P.M.
PORT ADVENTURES DESK	DECK 5, Mid	9:00 A.M. - 5:00 P.M. 7:00 P.M. - 8:30 P.M.
QUIET COVE POOL	DECK 11, Fwd	6:00 A.M. - 12:00 MID
SATELLITE FALLS	DECK 13, Fwd	6:00 A.M. - 6:30 P.M.
SENSES FITNESS CENTER	DECK 11, Fwd	6:30 A.M. - 10:00 P.M.
SPORTS SIMULATORS	DECK 13, Aft	9:00 A.M. - 6:00 P.M.

GENERAL INFORMATION

ARR-CADE	DECK 11, Aft	24 HOURS
DISNEY VACATION CLUB	DECK 4, Mid	4:30 P.M. - 10:00 P.M.
FUTURE CRUISE SALES DESK	DECK 4, Mid	9:00 A.M. - 9:00 P.M.
GUEST SERVICES	DECK 3, Mid	24 HOURS
MEDICAL HEALTH CENTER	DECK 11, Fwd	9:30 A.M. - 11:00 A.M. 4:30 P.M. - 7:00 P.M.
PORT & SHOPPING DESK	DECK 4, Mid	7:30 P.M. - 8:30 P.M.
PRELUDES	DECK 3, Fwd	5:45 P.M. - 6:30 P.M. 8:00 P.M. - 8:45 P.M.
SENSES SPA AND SALON	DECK 11, Fwd	8:00 A.M. - 10:00 P.M.
SHUTTERS PHOTO GALLERY	DECK 4, Mid	10:00 A.M. - 11:00 P.M.
SHUTTERS DIGITAL	DECK 4, Mid	24 HOURS

SHOPPING

BIBIDI BOBADI BOUTIQUE	DECK 5, Mid	9:00 A.M. - 9:00 P.M.
MICKEY'S MAINSAIL	DECK 3, Fwd	9:00 A.M. - 11:00 P.M.
SEA TREASURES	DECK 3, Fwd	9:00 A.M. - 11:00 P.M.
VISTA GALLERY	DECK 4, Mid	9:00 A.M. - 11:00 P.M.
WHITECAPS	DECK 3, Fwd	9:00 A.M. - 11:00 P.M.

DINNER
Animator's Palace: Pacific Rim
Enchanted Garden: Continental Market
Royal Court: French Dinner
Dining Times: 5:45pm & 8:15pm

DRINK
Mai Tai (Alcoholic)
Coco Ball (Non-Alcoholic)

WEATHER FORECAST
Sunday: Partly Sunny
High: 77°F/25°C
Monday: Sunny
High: 82°F/28°C

Evening Attire: Formal Attire

DINING & LOUNGES

BRUNCH

CABANAS CONTINENTAL	DECK 11, Aft	7:00 A.M. - 7:30 A.M.
CABANAS	DECK 11, Aft	7:30 A.M. - 10:45 A.M.
ENCHANTED GARDEN	DECK 2, Mid	9:00 A.M. - 10:45 A.M.
ROYAL COURT	DECK 3, Mid	8:00 A.M. - 9:30 A.M.

LUNCHEON

CABANAS	DECK 11, Aft	12:00 P.M. - 2:15 P.M.
ENCHANTED GARDEN	DECK 2, Mid	12:00 P.M. - 1:30 P.M.
ROYAL COURT	DECK 3, Mid	12:00 P.M. - 1:30 P.M.
FILLMORE'S FAVORITES	DECK 11, Mid	11:00 A.M. - 6:00 P.M.
LUIGI'S PIZZA	DECK 11, Mid	11:00 A.M. - 6:00 P.M.
TOW MATE'S GRILL	DECK 11, Mid	11:00 A.M. - 11:00 P.M.

DINNER

ANIMATOR'S PALATE	DECK 3, Aft	5:45 P.M. & 8:15 P.M.
ENCHANTED GARDEN	DECK 2, Mid	5:45 P.M. & 8:15 P.M.
ROYAL COURT	DECK 3, Mid	5:45 P.M. & 8:15 P.M.
CABANAS CASUAL DINING	DECK 11, Aft	6:30 P.M. & 8:30 P.M.

LATE NIGHT SNACKS

LUIGI'S PIZZA	DECK 11, Mid	9:30 P.M. - 12:30 A.M.
LA PLAZZA (18+)	DECK 4, Aft	10:45 P.M. - 11:45 P.M.

ADDED FEATURES

BEVERAGE STATION	DECK 11, Mid	24 HOURS
EYE SCREAM	DECK 11, Mid	11:00 A.M. - 11:00 P.M.
ROOM SERVICE	DIAL 0	24 HOURS

ENTERTAINMENT - LOUNGES - BARS

Adults must be 21 and older to consume alcoholic beverages.

BON VOYAGE	DECK 3, Mid	9:00 A.M. - 11:00 P.M.
COVE CAFE (18+)	DECK 11, Fwd	7:00 A.M. - 12:00 MID.
COVE BAR (18+)	DECK 11, Fwd	9:30 A.M. - 10:30 P.M.
CURRENTS (18+)	DECK 13, Fwd	10:00 A.M. - 11:00 P.M.
D LOUNGE	DECK 4, Mid	SHOW TIMES
FROZONE	DECK 11, Mid	11:00 A.M. - 11:00 P.M.
LA PLAZZA	DECK 4, Aft	12:30 P.M. - 12:30 A.M.
MERIDIAN (18+)	DECK 4, Aft	5:00 P.M. - 1:00 A.M.
O'GILLS PUB	DECK 4, Aft	1:00 P.M. - 1:00 A.M.
OUTLOOK	DECK 14, Mid	SUNSET
Ooh La La (18+)	DECK 4, Aft	5:00 P.M. - 1:00 A.M.
SKYLINE (18+)	DECK 4, Aft	5:00 P.M. - 1:00 A.M.
THE TUBE (18+)	DECK 4, Aft	10:00 P.M. - 2:00 A.M.
WAVES	DECK 12, Aft	10:30 A.M. - 6:30 P.M.
VISTA CAFE	DECK 4, Mid	7:30 A.M. - 11:00 P.M.

Consumers who order raw or partially cooked, ready-to-eat food of animal origin, are hereby informed that the food is not sufficiently cooked to ensure its safety.



Use your detective know-how and our special detective "badge" to search the ship and solve mysteries!
9:00 a.m. - 9:00 p.m.
Decks 2 & 5, Midship

IMPORTANT NUMBERS
Fire/Security: 7-3001
Medical/Emergency: 7-3000
Health Center: 7-1923